



Health and New Towns

Gemma Hyde

**Projects and Policy Manager
Town and Country Planning Association**

gemma.hyde@tcpa.org.uk

tcpa.org.uk

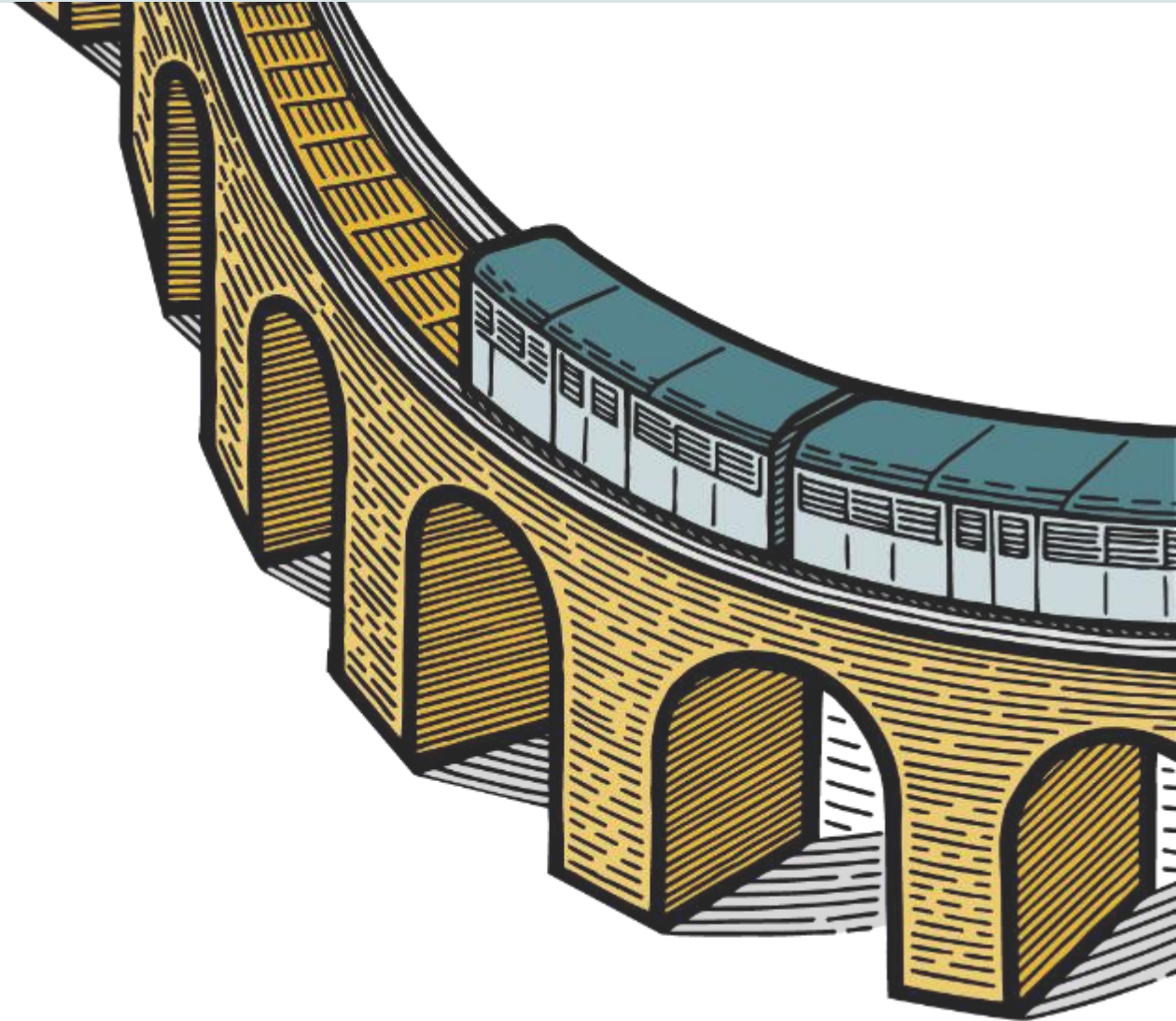


tcpa

Town and Country Planning Association

The **TCPA's vision** is for homes, places and communities in which everyone can thrive.

Our mission is to challenge, inspire and support people to create healthy, sustainable and resilient places that are fair for everyone.

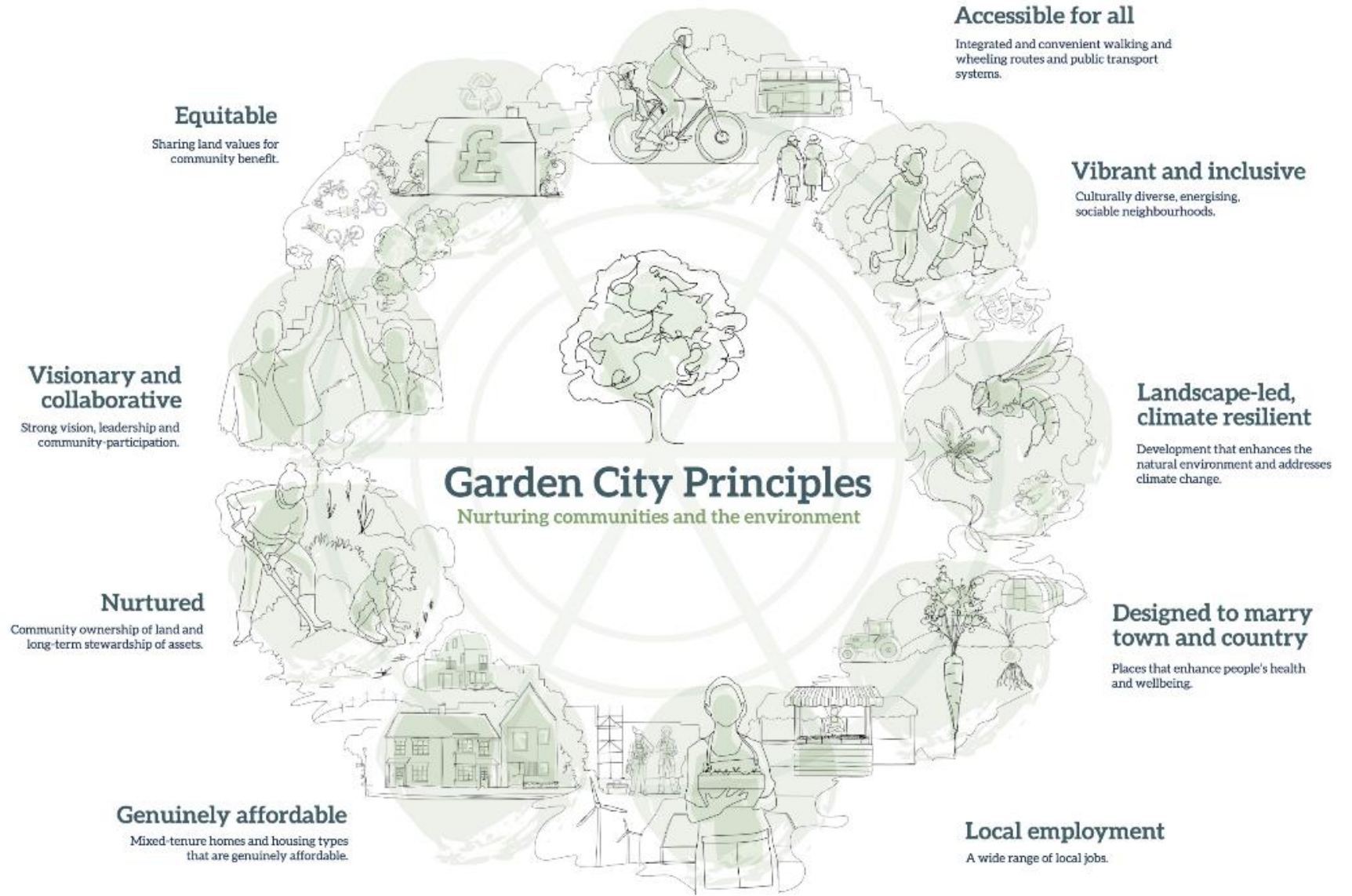




Ebenezer Howard



Octavia Hill



Equitable

Sharing land values for community benefit.

Visionary and collaborative

Strong vision, leadership and community-participation.

Nurtured

Community ownership of land and long-term stewardship of assets.

Genuinely affordable

Mixed-tenure homes and housing types that are genuinely affordable.

Accessible for all

Integrated and convenient walking and wheeling routes and public transport systems.

Vibrant and inclusive

Culturally diverse, energising, sociable neighbourhoods.

Landscape-led, climate resilient

Development that enhances the natural environment and addresses climate change.

Designed to marry town and country

Places that enhance people's health and wellbeing.

Local employment

A wide range of local jobs.

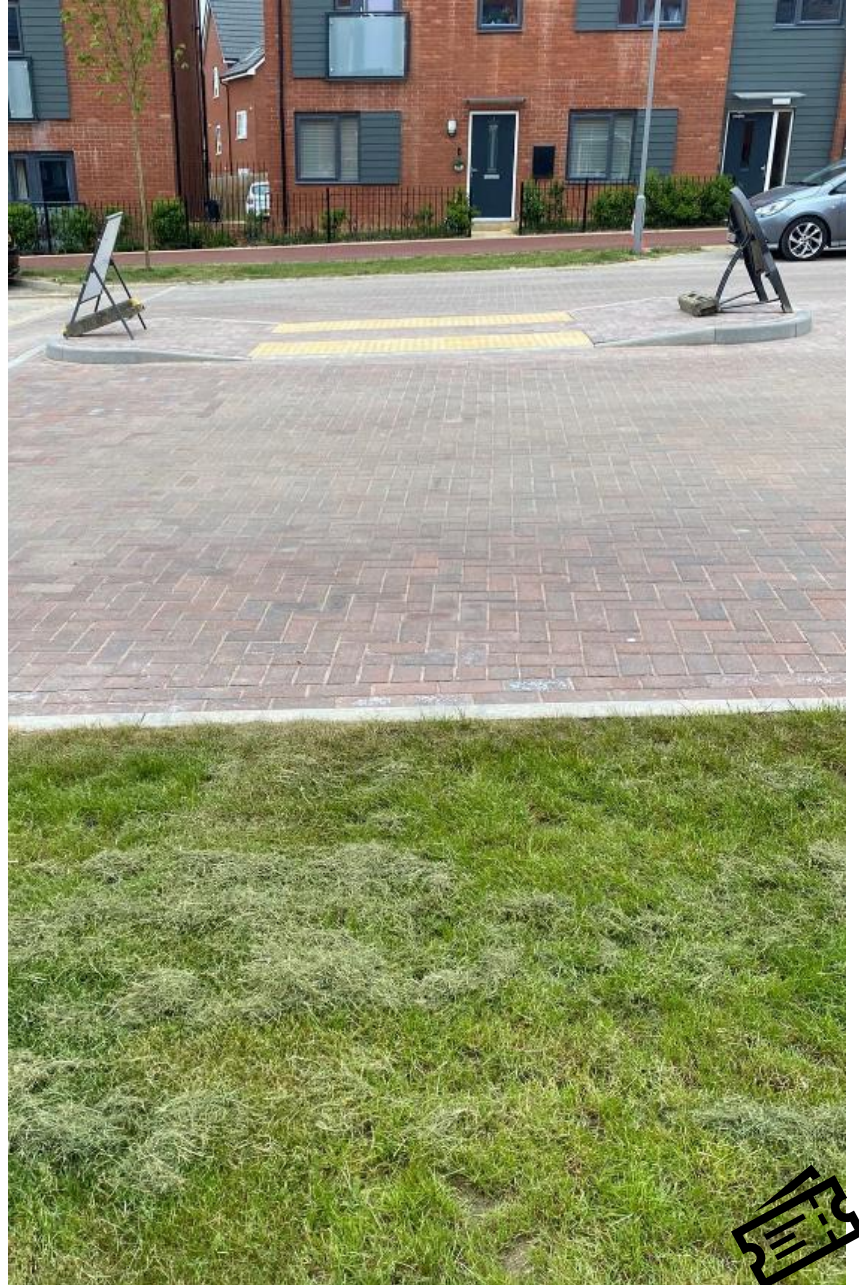
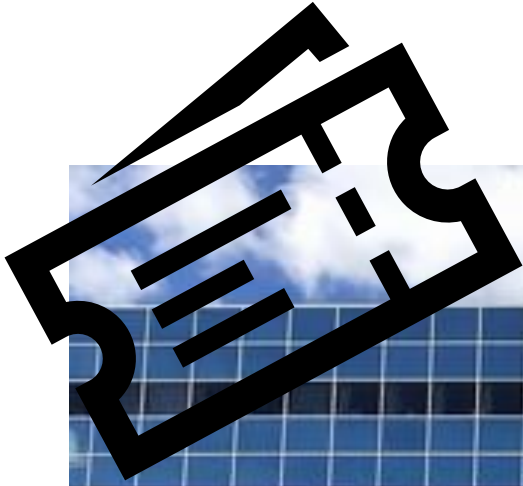
Garden City Principles

Nurturing communities and the environment

If you look back over the last 150 years, more has been done for public health by proper planning than almost any other intervention (except, perhaps, vaccination).

Prof Chris Whitty, Chief Medical Officer
TCPA Annual Conference (2022)





NHS England's Healthy New Town Programme



Published by NHS England in 2019 a practical guide to creating healthier new places, full of advice and evidence, free to download:

england.nhs.uk/ourwork/innovation/healthy-new-towns/

Key lessons

1. Health must be designed in from the start
2. Partnership working is essential
3. The built environment shapes behaviour and health inequalities (within and beyond the red line)
4. Innovation in health and care delivery needs spatial support
5. Community voice strengthens impact and legitimacy



Health in a new generation of New Towns



- Once in a generation opportunity
- Prioritise trust and democracy
- Land value capture for community's ongoing benefit
- Integrate public health considerations
- Challenge status quo of developer-led housing
- Built environment impacts on people's decisions
- Multidisciplinary approach



MILTON KEYNES

NEW CITY



The Parks Trust
MILTON KEYNES



Scheme: Mole Architects. Developer: TOWN.
Photo credit: David Butler / TOWN



Scheme: ZCD Architects / Rock Townsend Architects for Catalyst Housing
Developer: Jarvis Construction Photo credit: Jarvis Group





